



# TOUR DE BLOOM

Technical Guide

Pro-1-2: May 2-5, 2024

Amateur: May 3-5, 2024



PROUDLY PRESENTED BY WENATCHEE VALLEY BREWING CO.



Welcome riders!

Wenatchee Valley Velo Club extends a huge welcome to the 2024 Tour de Bloom Stage Race! We hope you enjoy the events. We appreciate your commitment to Pacific Northwest bike racing.

Your participation benefits our kids' riding safety program, *Lidz on Kidz*, putting 750 bike helmets on children, and benefits adding signage for a bike route from Leavenworth to Wenatchee.

The 2024 edition of the Tour de Bloom includes the Ed Farrar Road Race pb Stifel, the Still Properties Waterville Road Race, the Merckx-style Builders FirstSource Time Trial, the Rookard Pools Downtown Criterium, and the Arlberg Sports Plain Road Race with its hilltop finish. We've changed a few things up to give you an even better race experience.

New this year includes some of the following incentives:

- Women 3 have a choice to race Women Elite or Women 3-4-5
- Team General Classification is extended to include Elite Women (must have 3 teams of 5 registered)
- Composite team entry in the Elite categories
- New opportunities for non-licensed riders to experience racing

If we can be of help, please don't hesitate to contact us.

Best regards,

Ace Bollinger

Race Director – [tdbace@gmail.com](mailto:tdbace@gmail.com)

509-679-5003

Thank you for making Tour de Bloom part of your 2024 race season!

# Tour de Bloom

## TABLE OF CONTENTS

<b>SUMMARY OF DISTANCES (MILES OR TIME)</b> .....	<b>5 -</b>
<b>EVENT STAFF</b> .....	<b>6 -</b>
<b>RACE SERVICES</b> .....	<b>6 -</b>
<b>RACE OFFICIALS</b> .....	<b>6 -</b>
<b>1. RACE HEADQUARTERS</b> .....	<b>7</b>
<b>2. HOUSING</b> .....	<b>7</b>
<b>3. WEATHER</b> .....	<b>7</b>
<b>4. ORGANIZATION</b> .....	<b>7</b>
<b>5. TYPE OF EVENT</b> .....	<b>7</b>
<b>6. PARTICIPATION</b> .....	<b>7</b>
<b>7. MEETINGS &amp; PACKET PICK-UP</b> .....	<b>7</b>
<b>8. REGISTRATION AND ENTRY FEES</b> .....	<b>7</b>
<b>9. VENUES</b> .....	<b>8</b>
<b>10. FOREIGN RIDERS</b> .....	<b>8</b>
<b>11. TEAM PARTICIPATION</b> .....	<b>8</b>
ELITE TEAMS .....	<b>8</b>
ELITE INDIVIDUALS AND COMPOSITE TEAMS .....	<b>8</b>
<b>12. IDENTIFICATION NUMBERS</b> .....	<b>8</b>
<b>13. TECHNICAL SUPPORT</b> .....	<b>9</b>
<b>14. RADIO COMMUNICATIONS</b> .....	<b>9</b>
<b>15. FEED/LITTER ZONES</b> .....	<b>9</b>
<b>16. CONTROLS &amp; SIGNAGE</b> .....	<b>9</b>
<b>17. ROAD COURSE CLOSURES</b> .....	<b>9</b>
<b>18. CLASSIFICATIONS</b> .....	<b>9</b>
18.1 INDIVIDUAL GENERAL CLASSIFICATION.....	<b>9</b>
18.2 GC ON POINTS CLASSIFICATION (P-1-2) .....	<b>10</b>
18.3 MOUNTAINS CLASSIFICATION (P-1-2).....	<b>10</b>
18.4 BEST YOUNG RIDER (P-1-2).....	<b>10</b>
18.5 BEST TEAM CLASSIFICATION (P-1-2).....	<b>10</b>
<b>19. JERSEY PRIORITY</b> .....	<b>10</b>
<b>20. STARTS AND SIGN-IN</b> .....	<b>11</b>
<b>21. BONUSES</b> .....	<b>11</b>
<b>22. PENALTIES</b> .....	<b>11</b>
<b>23. MISHAPS IN THE FINAL 3KM</b> .....	<b>11</b>
<b>24. TIMING PROCEDURES</b> .....	<b>11</b>

# Tour de Bloom

<b>25. FINISHING LIMITS.....</b>	<b>11</b>
<b>26. RESULTS .....</b>	<b>11</b>
<b>27. TIME TRIAL .....</b>	<b>12</b>
<b>28. AWARDS CEREMONIES .....</b>	<b>12</b>
<b>29. MEDIA.....</b>	<b>12</b>
PHOTOGRAPHERS AND VIDEOGRAPHERS .....	12
INTERVIEWS.....	12
<b>30. ANTI-DOPING .....</b>	<b>12</b>
<b>31. PRIZES .....</b>	<b>12</b>
<b>32. MEDICAL HOSPITALS AND MEDICAL .....</b>	<b>14</b>
<b>33. RACE RESTAURANTS .....</b>	<b>14</b>
<b>STAGE 1: ED FARRAR MEMORIAL PB STIFEL.....</b>	<b>15</b>
<b>STAGE 2: STILL PROPERTIES WATERVILLE ROAD RACE.....</b>	<b>18</b>
<b>STAGE 3: BUILDERS FIRSTSOURCE TIME TRIAL .....</b>	<b>22</b>
<b>STAGE 4 ROOKARD POOLS TWILIGHT CRITERIUM .....</b>	<b>24</b>
<b>STAGE 5: ARLBERG SPORTS PLAIN ROAD RACE.....</b>	<b>26</b>
<b>34. APPENDIX – PAST WINNERS &amp; USEFUL FORMS .....</b>	<b>29</b>

# Tour de Bloom



**JAKROO**

Pro Categories Classification Leader Jerseys



General Time



Points



Mountains



Best Young

## SUMMARY OF DISTANCES (MILES OR TIME)

CATEGORY	Ed Farrar RR	Waterville RR	Palisades ITT	Wenatchee CT	Plain RR
Elite Men P-1-2	58.3	88	8.5	60 min	75.2
Elite Women P-1-2	45.5	59	8.5	50 min	50.7
Men 2-3		59	8.5	45 min	75.2
Women 3-4		59	8.5	30 min	50.7
Women 4-Novice		30	8.5	20 min	26.2
Men 4 /Novice		59	8.5	30 min	50.7
Msr 35+ 1-2-3		59	8.5	45 min	75.2
Msr 50+ 1-2-3					
Men 40+ 4/Novice					
Msr 50+ 3-4-Novice		59	8.5	30 min	50.7
Msr 60+ Open					

# Tour de Bloom

EVENT STAFF			
<b>Race Director</b>	Ace Bollinger	<b>Technical Ops &amp; Teams</b>	Dot Abbott
<b>Project/Venue Directors:</b>		<b>Financial Director</b>	
<b>Waterville Road Race</b>	Lars Hakensen	<b>Operations/Housing</b>	Kristen Poulter
<b>Time Trial</b>	Steve Johnson	<b>Sponsor Fulfillment Coord</b>	Jamie Howell
<b>Wenatchee Criterium</b>	Al Creek	<b>Driver Coordinator</b>	Greg Brown
<b>Plain Road Race</b>	Dan Bass	<b>Operations/Transportation</b>	
<b>Criterium Media</b>	Mike & Jakie Endsley	<b>Sponsoring Team</b>	Wenatchee Valley Velo
<b>Race Media Production</b>	Howell at the Moon	<b>Vol. Coordinator</b>	Adria Still

RACE SERVICES			
<b>Registration</b>	Dirk Cowley	<b>Timing</b>	One2Go Event Services
<b>Results</b>	Race Day Event Software	<b>Radio Tour</b>	Dot Abbott
<b>Neutral Support</b>	Arlberg Sports	<b>Pro Race Regulator</b>	Tod Manning
<b>Security</b>	Wenatchee Police	<b>Medical Services Lead 1</b>	Tom Ettinger
<b>Race Photographer</b>	Ben Holton	<b>Medical Services Lead 2</b>	Shawn Ballard
<b>Merchandise Coord</b>	Nalini Patton	<b>Podium Production</b>	Mia Bollinger

RACE OFFICIALS			
<b>Chief Referee/President</b>	Tim Sherrill	<b>Chief Judge Men P</b>	Holly Blanco
<b>Jury Panel Member/Comm</b>	Mike Sirott	<b>Chief Judge Women P</b>	Wade Schulz
<b>Jury Panel Member/Motor</b>	Tod Manning	<b>Assistant Judge</b>	Jeffrey Aurand
<b>Referee</b>	Phil Miller	<b>Referee - Motor</b>	Robert Velez
<b>Referee</b>	Juan Mejia		
<b>Motor Referee</b>	James Abbott	<b>Apprentice</b>	Betsy Stern

A special thanks to the Washington State Patrol, WASDOT, Douglas County, and the local municipalities of Waterville, Wenatchee, and Plain for their assistance.

THE TOUR DE BLOOM IS PROUDLY PRESENTED BY WENATCHEE VALLEY BREWING CO.



# Tour de Bloom

## 1. RACE HEADQUARTERS

Race headquarters are open starting Wednesday May 1 from 2:30 PM - 7:00 PM. It is located at:

*Arlberg Sports*  
Grand Central Building  
25 N. Wenatchee Ave.  
Wenatchee, WA 98801

Race entry acknowledges that you have read this technical guide. **Please take a screen shot of your license. Cell service may not be available.**

## 2. HOUSING

### RACE HOTEL

*Holiday Inn Express*  
1921 N Wenatchee Ave  
Wenatchee, WA 98801

Online Reservation with Race Discount!

### PRO-1-2 HOST HOUSING

Email [SKPoulter@Hotmail.com](mailto:SKPoulter@Hotmail.com) to request information. Preference will be given to Pro-1-2 teams traveling the greatest distance.

### RACE HOSTEL

*Cross Sport Performance*  
501 S. Wenatchee Ave.  
Wenatchee, WA 98801

Email [Ace"at"tdbace@gmail.com](mailto:Ace) for information on reserving space at the race hostel.

## 3. WEATHER

May is typically sunny and warm in the Wenatchee Valley. But prepare for cool mornings and evenings, and considerable variation in the weather between stages. The weather on Stage 1 will quite likely be a bit different than what is encountered on the final stage. Come prepared for any type of weather!

## 4. ORGANIZATION

Tour de Bloom presented by Wenatchee Valley Brewing Co. is organized by the Wenatchee Velo Cycling Team under the regulations of USA Cycling. Permit # 2024-6590. It is held May 2-5, 2024 in the Wenatchee Valley.

## 5. TYPE OF EVENT

The event is classified as a Regional A Stage Race under USA Cycling regulations.

## 6. PARTICIPATION

**Elite categories:** These events have monetary prizes and Team GC. A minimum of 30 riders is required. Men Pro-1-2 and Women Pro-1-2-3

### Amateur and Beginner categories:

Men Category 2-3  
Men Category 4-5  
Women Category 3-4-5

**Masters categories:** Groupings race together with independent results. At least 10 riders per age grouping are required for separate results and prizes. Categories with fewer than 10 riders will be combined.

Group 1: Men 1-2-3 35+ with Men 1-2-3 50+  
Group 2: Men 4-5 40+, Men 3-4-5 50+, Open 60+

## 7. MEETINGS & PACKET PICK-UP

<b>Wednesday May 1</b> 4:00-6:00 PM <b>Arlberg Sports</b>	Elite Packet Pickup 25 N. Wenatchee Ave, Wenatchee, WA
<b>Wednesday May 1</b> 6:00-7:00 PM <b>Arlberg Sports</b>	Elite M/W Team Meeting (Upstairs) 25 N. Wenatchee Ave, Wenatchee, WA
<b>Wednesday May 1</b> 7:00-8:00 PM <b>Arlberg Sports</b>	Caravan Drivers Meeting 25 N. Wenatchee Ave, Wenatchee, WA
<b>Thursday May 2</b> 5:30 PM – 7:30 PM <b>Arlberg Sports</b>	Amateur Packet Pickup 25 N. Wenatchee Ave, Wenatchee, WA
<b>Friday May 3</b> 8:30 AM - 1:30 PM <b>Waterville HS</b>	Day-Of Amateur Pick up 200 E Birch St, Waterville, WA

## 8. REGISTRATION AND ENTRY FEES

Register for Tour de Bloom online at [BikeReg.com](https://www.bikereg.com). We encourage early registration. We anticipate fields to fill quickly. Wait listing is available. **No day-of registration is available except for Beginner races.**

### DISCOUNTS:

Early Bird discount: Through **1/1/24**

Discount register by **4/1/24**

Full Price online registration through **5/1/24**

## 9. VENUES

- Ed Farrar Road Race pb Stifel – Malaga (Pro M/W Only)
- Still Properties Waterville Road Race
- Builder’s First Source Time Trial - Palisades
- Wenatchee Twilight Criterium
- Plain Road Race

## 10. FOREIGN RIDERS

Canadian riders must present a UCI license. Provincial licenses are not accepted.

Other foreign riders must present a UCI license and a signed “Foreign Permission Letter” from their federation that contains the following information:

1. Name (as it appears on Passport)
2. Team or club name
3. Nationality
4. UCI ID number
5. A statement that the rider has permission to race in the United States from (date of entry) through (date of exit)
6. A statement that the rider is covered with medical insurance for incidents in the USA during this period.

Without the Foreign Permission letter, the foreign rider acknowledges that they are solely responsible for their medical expenses.

## 11. TEAM PARTICIPATION

Tour de Bloom is a team-limited event. **All** race categories are limited to a maximum of 8 riders per team. If a category has fewer than 100 riders registered 30 days before the event, the limit may be increased to a maximum of 10 riders per team. If one week before the event a field has fewer than 100 entries, the team limit may be further increased to a maximum of 12 riders per team.

Registered Teams may have tents outside the Criterium course as pre-arranged with the Teams Liaison or Ace Bollinger 509-679-5003.

The team leading on Team GC each evening may be invited to attend a special meal at one of our sponsoring restaurants.

## Elite Teams

Elite Teams must register as a team and start Stage 1 with a minimum of 5 to be considered for Team GC. Teams may not enter an additional Development or Tier 2 Team. For full benefits, teams should register no later than April 15. Each team must have one representative at the Team Meeting. (See [Meetings and Packet Pick-up](#)).

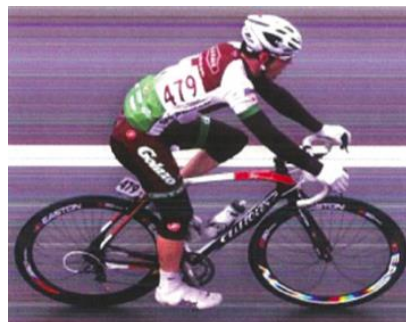
## Elite Individuals and Composite Teams

Riders may register individually or on composite teams for the event provided the team of any of these riders is not entered. Composite teams are requested to find similar jerseys.

## 12. IDENTIFICATION NUMBERS

Two bib numbers will be issued per rider. Both numbers must be worn in all stages including the Time Trial. It is forbidden to fold, cut, or mutilate bib numbers. Riders must ensure their numbers are always visible, properly placed, and readable during the event. Bib numbers that cannot be read may result in sanctions.

Bib numbers are to be placed parallel with and just above the side seam of the jersey, positioned as in the following:





## 13. TECHNICAL SUPPORT

**General:** All non-Elite races are supported under “Wheels in wheels out”. Support for the Elite Road races have mechanical assistance provided by *Olympia Endurance Sport Training, LLC* and *Arlberg Sports*.



**Elite Road Races:** Teams entering with a team of 5-8 riders in the Elite categories may have a team car in the caravan. Drivers of team cars must attend the Caravan Drivers Meeting as scheduled. See [meetings & Packet Pick-up](#). Race Radios may be distributed at this time and prior to each road race. If you have an FRS radio, please bring it. Radios are to be returned at the conclusion of each stage to be recharged. No cars for the Time Trial.

**Amateur and Masters:** Road race wheel support is “wheels in wheels out” unless enough wheels are provided per race start. The race officials will announce if wheel support is “neutral”. **Racers are encouraged to bring extra wheels.** Clearly mark your set of wheels with your bib number and team name before leaving them with the wheel vehicle.

## 14. RADIO COMMUNICATIONS

Per USAC 1J6, radio communications are permitted for races Cat. 2 and higher. A derogation has been requested to allow team radio communications for the Women P123.

Radio Tour will be over FRS – frequency TBA.

## 15. FEED/LITTER ZONES

Feed zones for Road stages will be provided for some or all the competing categories depending on the distance each group is racing.

Except where feeding from Team vehicles is available, hand-ups to riders must occur within the feed zone from the **RIGHT** side of the road only. More details appear in the Technical Stage Summaries.

## 16. CONTROLS & SIGNAGE

The races will start by gunshot, whistle, or countdown clock and tones.

Elite Road race signage will include the following distances from the start: 0km when there is a neutral start. All race distances are computed from this point.

Feed/litter zones will be marked with “Begin Feed” and “End Feed”. This is the *only* location on road courses where bottles and trash may be deposited. Elite Road race distances to the finish include: 5km, 1km, and 200 meters. The 200-meter sign indicates the location for full use of the road at the Finish only for all categories (Waterville Road Race only).

## 17. ROAD COURSE CLOSURES

**Men and Women Pro-1-2:** A rolling closure will be provided, allowing riders to use both sides of the road, except as noted in the Stage Summary. Riders falling behind the following sheriff vehicle must obey the rules of the road including the centerline rule.

**Amateurs and Masters:** Centerline is in effect for all stages. It is forbidden to cross the centerline. Advancing across the centerline may result in a time penalty, relegation, or Disqualification.

**CAUTION!** In many places there is no shoulder for oncoming vehicles to park. Visibility around corners may be limited. Caution is advised especially on the left side of the road.

## 18. CLASSIFICATIONS

The following classifications will be awarded. All Classification leaders are required to wear the appropriate jersey.

### 18.1 INDIVIDUAL GENERAL CLASSIFICATION

All categories have an Individual General Classification. The competitor with the lowest cumulative time for all stages is the GC Leader. The General Classification includes any penalties assessed by the Race Jury minus time bonuses awarded.

The tiebreaker will be applied as follows until the tie is broken:

# Tour de Bloom

1. Fractions of a second from the Time Trial.
2. Sum of the stage placings.
3. Place obtained in the last stage ridden.

## 18.2 GC ON POINTS CLASSIFICATION (P-1-2)

The Points Classification Leader is the rider with the most points earned at intermediate sprint locations and on stage finishes.

The tiebreaker will be applied as follows until the tie is broken:

1. Most first place stage finishes.
2. Most first place intermediate finishes.
3. General Individual Classification by time.

	1	2	3	4	5	6	7	8
Finish A	15	12	9	7	5	3	2	1
Finish B	9	7	5	3	2	1		
Int Pts	5	3	2					

	Men Elite					Women Elite				
	S1	S2	S3	S4	S5	S1	S2	S3	S4	S5
Int	3	2		3	2	3	1		2	1
FinA		1		1			1		1	
FinB	1		1		1	1		1		1

## 18.3 MOUNTAINS CLASSIFICATION (P-1-2)

The Mountains Classification Leader is the rider with the most points earned at Mountain classification locations each stage.

The tiebreaker will be applied as follows until the tie is broken:

1. Most wins in the highest category climb.
2. Most wins in the next category climb (etc)
3. General Individual Classification by time.

Place:	1	2	3	4	5	6	7
Cat 1	12	9	7	5	3	2	1
Cat 2	7	5	3	2	1		
Cat 3	5	3	2	1			
Cat 4	2	1					

Cat:	Men Elite			Women Elite		
	S1	S2	S5	S1	S2	S5
1	1			1		
2	2			1		
3			1			1
4		3			2	

## 18.4 BEST YOUNG RIDER (P-1-2)

The Best Young Rider Classification is open to riders with a racing age of 22 or less. It is calculated the same as the Individual General Classification.

## 18.5 BEST TEAM CLASSIFICATION (P-1-2)

Team Classification is open to teams that start Stage 1 with a team of 5-8 riders in that category. Teams reduced to fewer than three riders are eliminated from the Team General Classification.

At the conclusion of the final stage, the team winning the overall Team General Classification will be awarded. The entire team is to appear at the awards ceremony.

**Stage Team Classification** is calculated based on the sum of the three best individual times from each team. The tiebreaker will be applied as follows until the tie is broken:

1. Sum of the places acquired by their three lowest timed riders on the stage.
2. Placing of their best placed rider for the stage.

**Team General Classification** is calculated on the sum of the three best individual times from each team in each stage ridden. The tiebreaker will be applied as follows until the tie is broken:

1. Number of first places in the Stage Team Classification.
2. Number of second places in the Stage Team Classifications, etc.
3. Placing of the best placed rider in the Individual General Classification.

## 19. JERSEY PRIORITY

The 2024 Tour De Bloom will provide at a leader's jersey on GC for each stage for the Elite categories. For other categories the GC winner receives a leader's jersey after the final stage.

For Elite categories, in the case that one rider is leading in more than one classification, the next eligible rider shall wear the jersey unless obligated to wear another jersey. The order of priority is:

1. Individual General Classification
2. Individual Points Classification
3. Mountains Classification
4. Best Young Rider Classification
5. Champion jerseys (in order of importance)

## 20. STARTS AND SIGN-IN

Competitors must sign in at the assembly point of each race except for the Time Trial. Sign-in opens one hour and 10 minutes before the start and closes 10 minutes before each stage. Riders not taking the start are to inform the Chief Judge before the start of the stage.

Ten minutes before the start of each stage except the Time Trial the competitors leading the various classifications will be called to the front of the starting line. Additional riders may be selected to participate in this ceremony.

## 21. BONUSES

Time bonuses apply to General Classification. They will be awarded at the finish of all races except the Time Trial, and at intermediate sprint locations. Non-Elite category intermediate points go to the overall GROUP racing together. Finishing bonuses in combined categories go to each group that is scored separately. See the Technical Summary of stages 2 Waterville and 4 Criterium. Elite categories have intermediate and Finishing time bonuses as listed in the schedule below.

	1 <sup>st</sup>	2 <sup>nd</sup>	3 <sup>rd</sup>
Intermediate Sprints	3"	2"	1"
Stage Finish	10"	6"	4"

Stage:	Men Elite					Women Elite				
	1	2	3	4	5	1	2	3	4	5
Int #	3	2	0	3	2	3	1	0	2	1
Finish	1	1	0	1	1	1	1	0	1	1

## 22. PENALTIES

The USA Cycling scale of penalties as they apply to stage races is entirely applicable to this event. They may be applied to the Stage, to General Classification, or to Team GC.

## 23. MISHAPS IN THE FINAL 3KM

Riders who suffer a mishap in the last 3km of a road stage or after free laps have ended in the Criterium will be given the same finish time as the riders they were with at the time of the mishap, provide the mishap was observed or otherwise verified by a race official, and the rider shows a will to finish the race if able to do so. Riders are to make their situation known to the race officials at the Finish Line. The

rider will be given their actual place across the finish line, or last in the stage if the rider is unable to finish.

This rule shall not apply in the case of hill climb finishes:

- Stage 1 Ed Farrar Memorial Joe Miller RR
- Stage 5 Arlberg Sports Plain RR

In all cases regarding qualifications, the Race Jury shall decide on any discussions concerning "hill climb finish".

## 24. TIMING PROCEDURES

Timing procedures will follow the USA Cycling rules for stage races.

For the combined races, a new time will be assigned without regard as to whether the rider is in the same or a different age group.

## 25. FINISHING LIMITS

Considering the characteristics of each stage, the finishing time limits set for each category appear in the Technical Summary of each stage. If no time limit is set for a category riders must finish before the sweep vehicle crosses the finish line.

In exceptional cases only (force majeure) the Race Jury may with the agreement of the Organizer extend the finishing time limits.

## 26. RESULTS

Results will be emailed to participants by category to the email provided during registration. They will be posted to [YourResults.Live](https://YourResults.Live) and at [TourdeBloom.RaceDayWebsites.com/](https://TourdeBloom.RaceDayWebsites.com/)

Protests concerning the order of finish and timing must be submitted to the Chief Judge no later than 1 hour before the start of the next stage. Protests concerning the final stage and General Classification must be submitted to the Chief Judge within 15 minutes after being posted online.

Changes made to the results after the Awards and payout have taken place will only revise the results as submitted to USA Cycling. No changes to the prize list will be made after that time.

Protests on field of play decisions must be written, accompanied by a \$20 fee, and filed with the Chief Referee. If the protest is upheld the fee shall be

refunded. If it is denied, the fee will be submitted to the USA Cycling Jr Development Fund.

## 27. TIME TRIAL

All riders will start at 30-second intervals in inverse order of General Classification. Start times will be posted on the web site and emailed to the address on file from the rider's registration.

**Equipment:** For Elite classes, time trial equipment may be used. Triathlon type equipment is excluded (USA Cycling approved equipment only).

All other categories are restricted to standard mass-start road racing bicycles only. Show us your spokes! **No aero wheels (tri-spoke, wheels with fewer than 12 spokes, deep dish > 80mm, disc wheels, wheel covers, etc.), frames, fairings, bar extensions, or equipment.** Aerodynamic helmets meeting regulations may be used. Per USAC 3B11, "puppy paws" position is permitted ONLY in the time trail, per USAC 3B11.

**Support:** No vehicles are permitted to follow. Neutral support will be available at the Start area for mechanical assistance. See the stage details for more information concerning mishaps.

## 28. AWARDS CEREMONIES

Awards ceremonies will be held for each category with at least 10 participants.

The following must attend the official Stage award ceremony (Amateurs: stage winners and GC only):

1. The first three finishers of the stage
2. The Best Young Rider Classification leader
3. The Mountains Classification leader
4. The Points Classification leader
5. The General Classification Leader

After the conclusion of the final stage the following must attend the Awards Ceremony immediately after the finish of the race (as applicable):

1. The first three finishers of the stage
2. The Best Young Rider Classification winner
3. The Mountains Classification winner
4. The Points Classification winner
5. The first three of the General Classification
6. The full team winning the Team General Classification

## 29. MEDIA

## PHOTOGRAPHERS AND VIDEOGRAPHERS

Photographers wishing access to the course and finish areas are to contact the Race Organizer. **Photographers should be wearing a bright colored safety vest while on the course. A green or orange vest is required to take photos on course past the Finish line.** Photographers must travel opposite the race, and are to remain behind the photographer's zone past the finish line on race finishes. Drones must be arranged in advance and may not fly closer than 5m to riders or spectators.

## INTERVIEWS

All riders must be available for press interviews at the request of a media representative of the Race Committee or the Team Liaison. Immediately following the conclusion of each stage, the race's media relations team will facilitate an immediate video interview either at the finish line or backstage prior to the awards ceremony. If time permits, the cyclists may be asked to participate in additional brief backstage interviews prior to or during the awards ceremony.

## 30. ANTI-DOPING

USA Cycling anti-doping regulations are entirely applicable to the event. USADA may perform anti-doping testing for any category unannounced. Riders selected will be escorted to the doping control station by chaperone.

## 31. PRIZES

**Elites: plan for some great Beer Garden primes in the Criterium!** A grand total of \$20,000 will be awarded in prize money to the Pro-1-2 categories at the event. Prize money will be distributed directly to the winners. Prize winnings over \$600 will be reported to the Internal Revenue Service as individual income, and require completing the correct IRS forms, available at packet pick-up. Also see addendum. Failure to provide a completed form will result in 20% being withheld from prize winnings over \$600, as mandated by the IRS.

All prize money will be sent by Venmo or mailed within 10 business days. Racers must contact the Race Director to provide deposit information. Merchandise will be distributed at the Podium Presentation for each event. Merchandise cannot be

# Tour de Bloom

shipped Racers must be present to claim merchandise prizes.

**Stage Prizes:** Merchandise prizes will be awarded to the winners of each stage as follows:

Stage	1 <sup>st</sup>
1	Custom cowboy hat
2	Custom Oakley sunglasses
3	Custom belt buckle
4	Custom hatchets

## Pro-1-2 Men & Women Prize List

PL	Time Trial	Road / Crit	GC	Sprint	KOM	Best Young	Team
1	200	250	500	200	275	100	225
2	120	140	280	100	130	70	125
3	90	100	200	75	90	45	75
4	75	80	170		50		
5	60	70	140				
6		65	110				
7		60	90				
8		55	85				
9		50	80				
10		45	75				
11			70				
12			65				
13			60				
14			55				
15			50				
16			45				
17			40				
18			40				
19			40				
20			40				
ST	545	915	2235	375	545	215	425
#	1	4	1	11	1	11	
Primes		2000*					
<b>TOT</b>	<b>545</b>	<b>5660</b>	<b>2235</b>	<b>375</b>	<b>545</b>	<b>215</b>	<b>425</b>
<b>GRAND TOTAL</b>							<b>10,000</b>



# Tour de Bloom

## 32. MEDICAL HOSPITALS AND MEDICAL

Medical services will be available near the Finish line of each stage. Look for the “Red Cross” sign. Locations may also be indicated on the course maps.

In the case of an emergency, call 911.

### Hospital:

Central Washington Hospital.  
1201 S. Miller St  
Wenatchee WA 98801

### Medical Lead:

Tom Ettinger MD



**GARLINI'S  
NAPOLETANA**  
212 Fifth St.  
Wenatchee, WA 98801  
509-884-1707  
[garlinisrestaurant.com](http://garlinisrestaurant.com)

### **WOK-ABOUT GRILL WENATCHEE**

110 N Wenatchee Ave  
Wenatchee, WA 98801  
509-662-1154

### **WOK-ABOUT GRILL LEAVENWORTH**

920 Front St.  
Leavenworth, WA 98826  
509-548-9652

## 33. RACE RESTAURANTS

The Wenatchee Valley features dozens of restaurants and cafes. These restaurants are our featured race supporting restaurants for Tour de Bloom. **MAKE YOUR RESTAURANT CHOICE WITH OUR SPONSORS!**

### **McGLINN'S PUBLIC HOUSE**

111 Orondo Ave.  
Wenatchee, WA 98801  
509-663-9073  
[www.mcglinns.com](http://www.mcglinns.com)



### **MELA COFFEE ROASTING CO.**

17 N. Wenatchee Ave  
Wenatchee, WA 98801  
509-888-0374  
Monday - Saturday 7am-6pm,  
Saturday - Sunday 8am-4pm  
[melacoffee.com](http://melacoffee.com)



**WENATCHEE VALLEY  
BREWING COMPANY**  
108 E. Island View St.  
Wenatchee, WA 98801  
509-881-4529

[wenatcheevalleybrewingco.com](http://wenatcheevalleybrewingco.com)

*Special thanks to our Tour de Bloom Jersey Sponsor!*



# Tour de Bloom

## STAGE 1: ED FARRAR MEMORIAL PB STIFEL



### Ed Farrar Memorial pb Stifel

Categories	Sign-In	Start	Golf Laps	JM Laps	Total Mi	Mts Sprints	Int Points	Time Bonus	Time Limit
Elite Men P-1-2	7:50-8:50	<b>9:00</b>	4	2.3	58.3	Cat 2: 2 Cat 1: 1	3	3 In + F	25%
Elite Wom P-1-2-3	11:50-12:50	<b>13:00</b>	4	1.3	45.5	Cat 2: 1 Cat 1: 1	3	3 In + F	30%

### Thursday May 2

\* **Men 2 and Women 3 Riders not finishing this stage:** Men Category 2 and Women Category 3 riders not finishing within the time limits of this stage will automatically be entered in the Category 2-3 Men or Women 3 stage race. They will be listed as DNF or OTL for this stage.

**Course Description:** *Ace likes to change everything; this course will be epic and a challenge!* Golf Course loop has a 1 mile climb at 5.7% grade. Joe Miller Loop has a 6.4 mile climb at 5.7% grade. Descents are .9 mile on Golf Course loop at -4%, and 5.5 mile at -5.3%.

#### Stage Notes

**Parking:** Alcoa main parking lot. **Do NOT ride on any other roads within the plant – per Alcoa!**

**Sign-In:** Near the Start line – Alcoa lot

**Staging:** Exit for Alcoa parking

**Intermediate Sprint Points:** On Malaga Alcoa Highway at the General Store first three passings.

**Time Bonuses:** At the Intermediate Sprints 3”-2”-1” and at the finish 10”-6”-4”.

**Mountains Classification Points:** Category 2 each lap at the top of Joe Miller Loop. Category 1 Finish.

**Feed zone:** Past the Finish Line, all Joe Miller Laps.

**Final Sprint:** Hillclimb finish. Finish Points B.

**Podium:** 15 min after finish of top 3 on stage. Location: Behind the finish stage

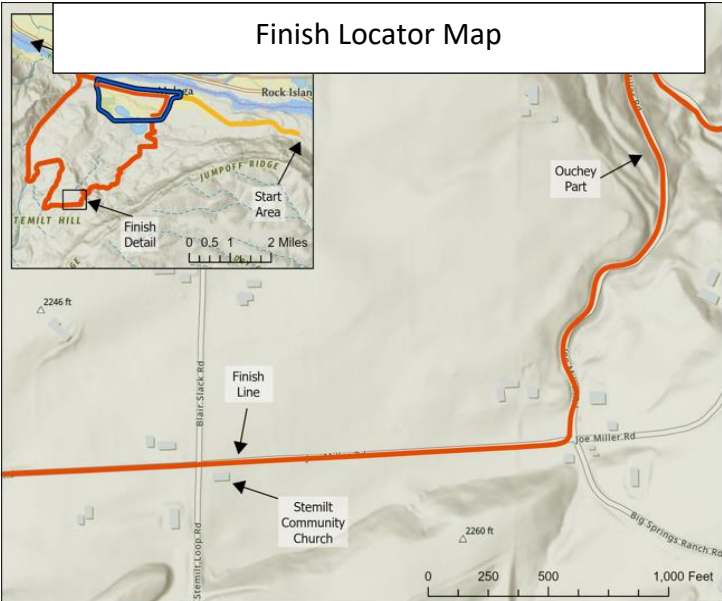
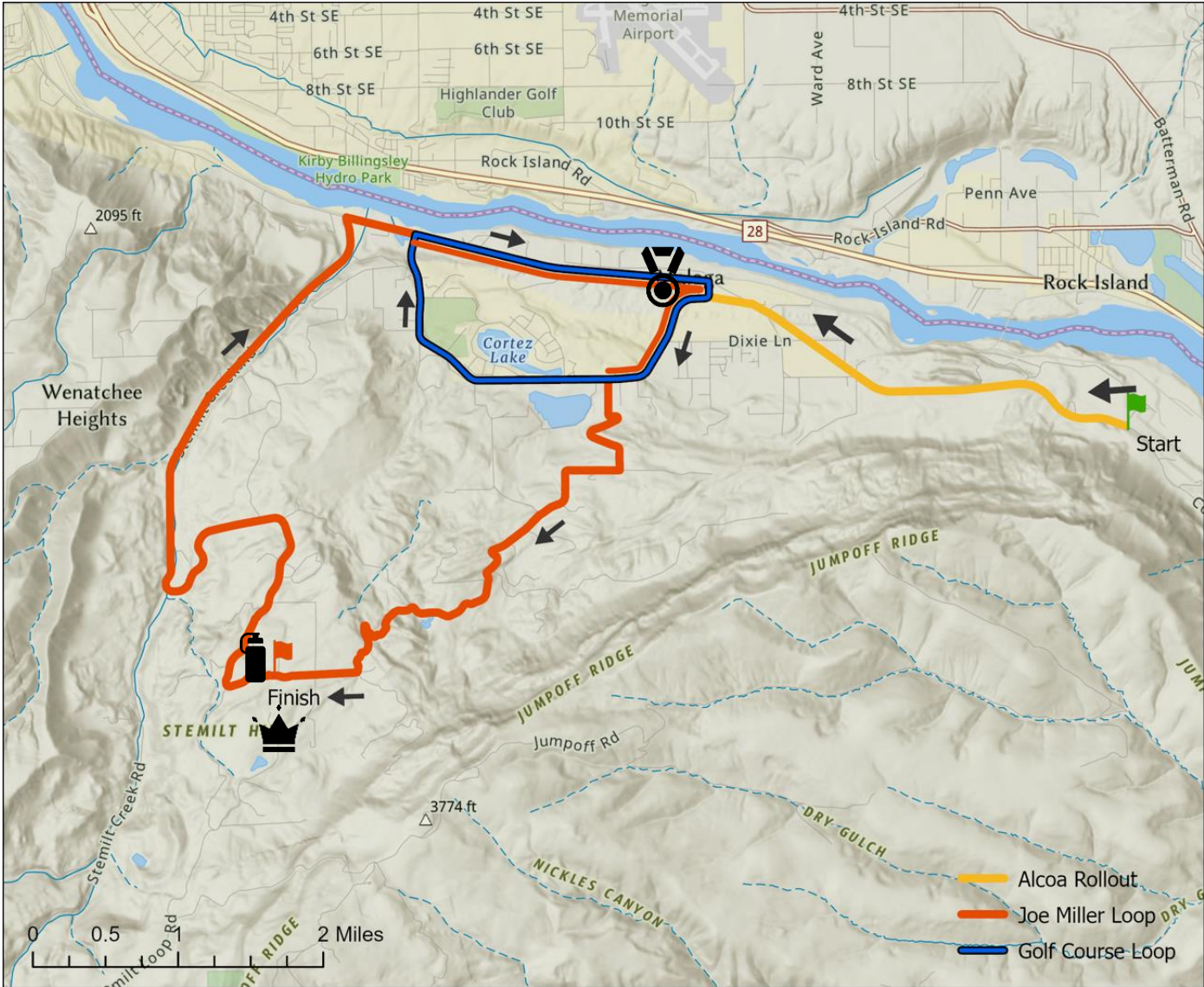
**Driving Directions** Plan about 20 minutes from Wentachee. Go east on Malaga Alcoa Highway. Turn left into Alcoa Wenatchee Works, 6200 Malaga Alcoa Hwy, Malaga, WA.

**Feeders:** Leave prior to the start. Follow the course directions but turn left up Joe Miller Road (orange route)

**Return Directions:** Please do not ride backwards on the course. Follow the direction of the course back to Parking. Be aware there may be another race on the course.

# Tour de Bloom

## STAGE 1 ED FARRAR PB STIFEL ROAD RACE

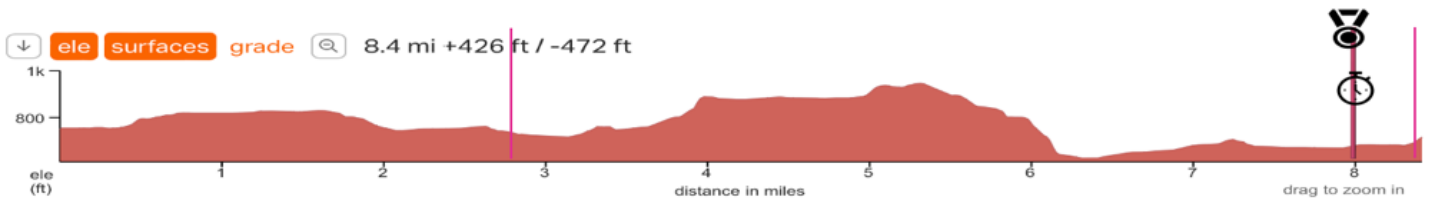




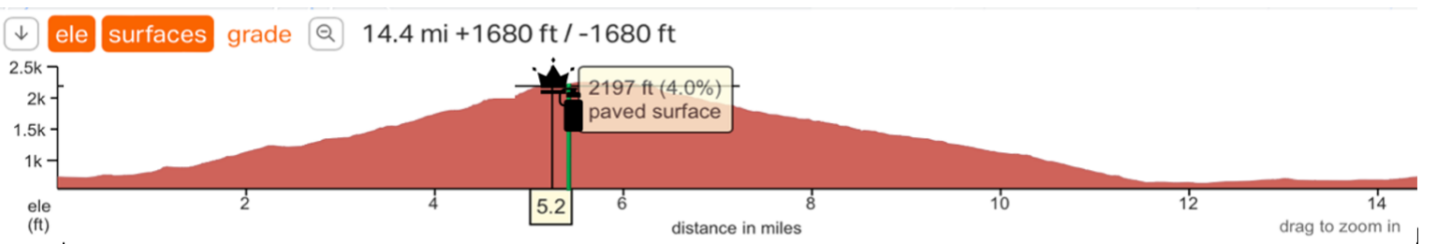
# Tour de Bloom

## Cuesheet Stage I. Ed Farrar Memorial pb Stifel

Neutral until after the first turn.	GC Lap 1	GC Lap 2	GC Lap 3	GC Lap 4
Turn right onto Malaga Alcoa Highway	0 miles		0 miles	
Turn left onto Firehouse Road (Corner 1)	2.8		2.8	
<b>Begin Golf Course Loop</b>	2.8	8.5	14.1	19.8
Turn left onto W Malaga Road (Corner 2)	3.1	8.7	14.4	20
Turn right onto Malaga Alcoa Highway	6.2	11.8	17.5	23.1
<b>Sprint + Time Bonus – Malaga Market Laps 1-2-3</b>	<b>8.0</b>	<b>13.6</b>	<b>19.3</b>	<b>24.9</b>
Turn right onto Firehouse Road	8.5	14.1	19.8	25.5
<b>End Golf Course Loop</b>	<b>END GC 1</b>	<b>END GC 2</b>	<b>END GC 3</b>	<b>END GC 4</b>
<b>Begin Joe Miller Loop (M=3 Climbs, W=2 Climbs)</b>	25.5	39.2	53	
Turn left onto W Malaga	25.7	39.5	53.2	
Turn left onto Joe Miller Road	26.7	40.5	54.3	
Continue right on Joe Miller Road	27.6	41.4	55.2	
<b>KOM at Finish Line – Cat 2 (Wom Fin L2 Cat 1, Men Fin L3 Cat 1)</b>	<b>30.7</b>	<b>44.5 (WF)</b>	<b>27.9 (MF)</b>	
<b>Feed Zone &amp; Green Zone</b>	<b>30.8</b>	<b>44.6</b>		
Continue straight through Four Corners	30.9	44.7	Return via course	
Turn right onto Malaga-Alcoa Highway	36.4	50.2		
Turn right onto West Malaga Road	38.7	52.5		
Turn left onto Joe Miller Road	39.2	53		
<b>End Joe Miller Loop</b>	<b>END JM 1</b>	<b>END JM 2</b>		



Start from Alcoa | 1 Lap of Golf Course Loop



Joe Miller Loop – Distance in miles for the loop.

# Tour de Bloom

## STAGE 2: STILL PROPERTIES WATERVILLE ROAD RACE



### Waterville Road Race

Off set	Categories	Sign-in Open	Start	1	2	3	Mts Laps	Elite Pts + TB (All) Lap	Feed Laps	Total Laps	Miles	Est. MPH	Limit	
0:00	Elite Men P-1-2	7:50-8:50	9:00	10:06	11:12	12:18	1,2,3	1,2,F	2,3	3	87	26.4	20%	
05:00	Master 35+ 1-2-3	7:55-8:55	9:05	10:18	11:31			1 (Group) F (Both)	2	2	58	23.8	Broom	
	Master 50+ 1-2-3													Broom
10:00	Men 2-3	8:00-9:00	9:10	10:23	11:37	12:50		1,F	2	2	58	23.6	Broom	
15:00	Men 4-5	8:05-9:05	9:15	10:29	11:44	12:59		1,F	2	2	58	23.2	Broom	
0:00	Elite Wom P-1-2-3	11:35-12:35	12:45	13:58	15:12		1,2	1,F	2	2	58	23.6	25%	
05:00	Master 40+ 4-5	11:40-12:40	12:50	14:05	15:21	16:39		1 (Group) F (All)	2	2	58	23.2	Broom	
	Master 50+ 3-4-5													Broom
	Master 60+ Open					#####								Broom
10:00	Women 3-4	11:45-12:45	12:55	14:19	15:44	17:09		1,F	2	2	58	20.5	Broom	
15:00	Women 4-Novice	11:50-12:50	13:00	14:26	15:53	17:20		F	n/a	1	29	20.0	Broom	

### Friday May 3

**“Broom” Time Limit:** Riders not getting to the finish line before the broom wagon or who take the broom wagon to the finish will be given the time of the slowest rider in their wave plus a 10-minute penalty and may start the next stage.

**Course Description:** The Still Properties Waterville Road Race incorporates roads in the classic Waterville wheat country. This course is flat with rollers, but don’t be deceived into thinking it’s an easy task! The wind just may play a role in the outcome. The 2023 course is updated to include two loops. The “Town Loop” is approximately 9 miles long and passes through downtown Waterville on Main Street. The “Country Loop” is roughly 20 miles long and includes the classic elements of our usual course.

**Mts Laps:** Elite categories, Mountains Category 4 Climb

**Driving Directions:** Take Wenatchee Avenue. Head north 3 miles. Continue on Hwys 2/97 East for two miles. Cross the Columbia River on the Odabashian Bridge. Turn LEFT at the intersection of Hwy 28 (Sunset Highway) to go north on Hwys 2/97 about 11 miles. Take the Hwy 2/Waterville exit. Continue 9.5 miles to

# Tour de Bloom

Waterville. Take Central Ave. to a RIGHT on Locust St., LEFT on Chelan Ave., RIGHT on E Third St, LEFT at **Waterville High School, 200 Birch St., Waterville, WA.**

## Stage Notes

**Parking:** ALL team/rider parking and overnight camping (\$25/night) is available at NCW Fairgrounds, 601 N. Monroe St. 509.745.8480 **Racer Parking is prohibited on city streets, and at the High School.**

**Sign-In:** Start line

**Staging:** Waterville High School Lower Parking lot, 200 E Birch

**Start:** Waterville HS, 200 E Birch St, Waterville, WA

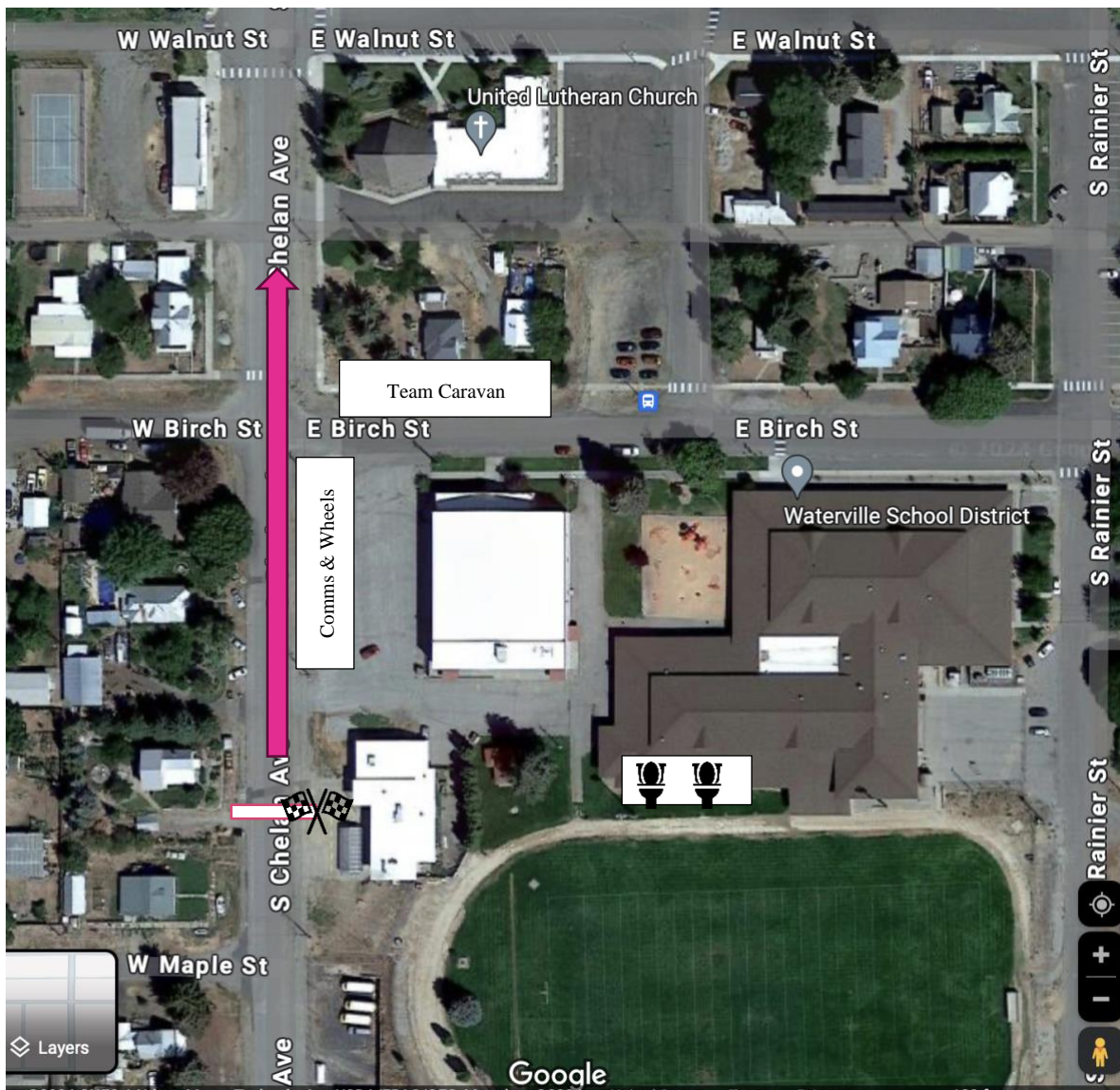
**CAUTION!** The roads used for this stage are **open to traffic.** Exception: Main envelope of Elites.

**Feed zone:** 10.3 miles into course. Feeding only on laps as above. In the case of extreme temperatures and conditions, at the discretion of the Chief Referee and Race Director and when announced at the start, water hand-ups from the race caravan *may* be available.

**Final Sprint:** Open course from W Beech St to the Finish – all categories

**Podium:** 30 min after finish of top 3 on stage. Location: Waterville HS, Waterville.

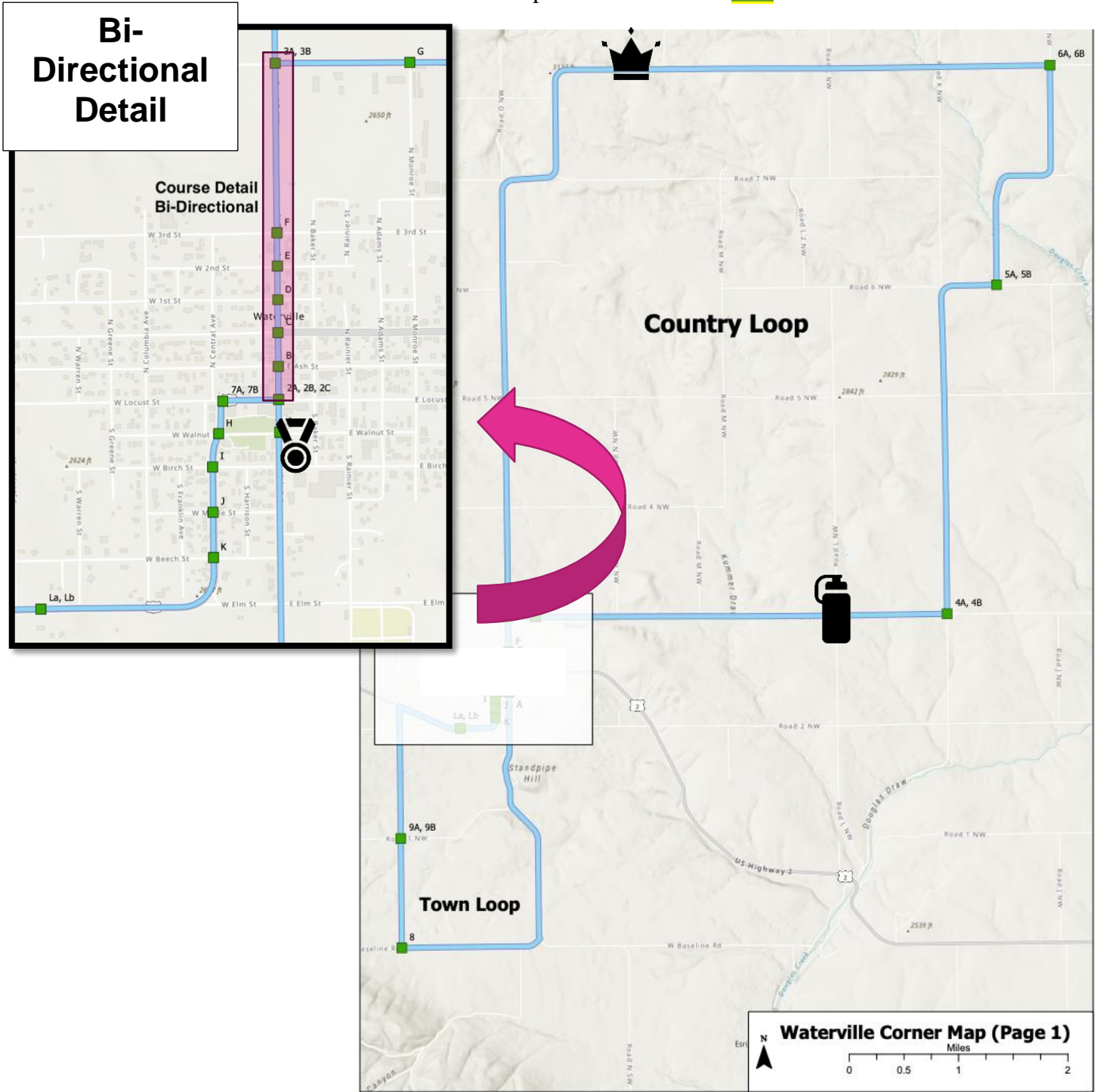
## STAGE 2 WATERVILLE ROAD RACE START LOCATOR MAP



# Tour de Bloom

## STAGE 2 STILL PROPERTIES WATERVILLE ROAD RACE COURSE MAP

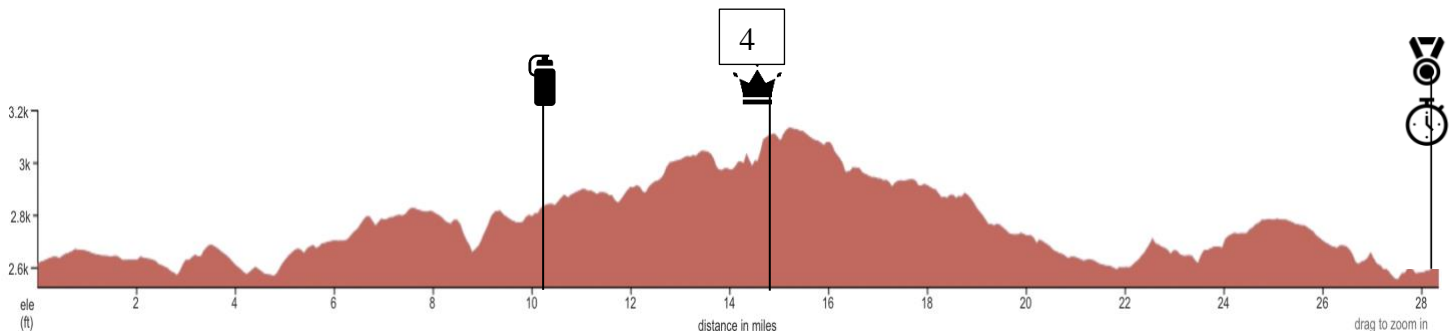
Online course map and detailed notes [here](#).



# Tour de Bloom

## Cuesheet | Lap of Waterville Course, 1 Circuit

<b>Start line Waterville High School</b>		<b>0 mi</b>
Continue straight on North Chelan Avenue	↑	0.2 mi
<b>CAUTION: Bi-directional race traffic. Keep right!</b>		
Continue straight past 3 <sup>rd</sup> St	↑	0.3 mi
Turn right onto Road 3 Northwest (Airport Rd Corner 1)	→	0.7 mi
<b>End Bi-directional race traffic</b>		
Turn left onto North Douglas Road (Rd K NW)	←	4.7 mi
Continue onto Road 6 Northwest		7.8 mi
Turn left onto Road J.5 Northwest (Corner 2)	←	8.2 mi
<b>Feed Zone and Green Zone</b>		<b>10.3 mi</b>
Turn left onto Road 8 Northwest	←	10.6 mi
<b>Elite: Mts Cat 4 climb all laps</b>		<b>14.3 mi</b>
Continue onto Road 7 Northwest		16.2 mi
Turn slight left onto Road O Northwest	←	16.6 mi
Straight through "Corner 2"	↑	
<b>CAUTION: Bi-directional race traffic. Keep right! ("Corner 2")</b>		<b>20.5 mi</b>
Continue onto North Chelan Avenue, US 2	↑	21.0 mi
Turn right onto West Locust Street, US 2	→	21.1 mi
Turn left onto East Park Street, US 2	←	21.2 mi
<b>End Bi-directional race traffic</b>		<b>21.1 mi</b>
Turn left onto Road 2 Northwest	←	22.2 mi
Turn left onto Road P Northwest	←	22.5 mi
Turn left onto West Baseline Road	←	24.7 mi
Turn left onto Road O Northwest	←	25.9 mi
<b>Final lap - Elite Caravan Deviation Turn RIGHT on East Elm St.</b>		<b>27.9</b>
<b>Finish Line &amp; Elite Intermediate Sprint all laps</b>		<b>29.0 mi</b>



# Tour de Bloom

## STAGE 3: BUILDERS FIRSTSOURCE TIME TRIAL



### Palisades - Time Trial

Categories	ESTIMATED Start	Points Classif.	Time Limit
Women 4-Novice	6:45		n/a
Men 4/Novice	7:05		30%
Women 3-4	7:45		30%
Master 60+ Open *	8:20		30%
Master 50+ 3-4-5 *	8:25		30%
Master 40+ 4-5 *	8:35		30%
Master 50+ 1-2-3 *	8:55		25%
Master 35+ 1-2-3 *	9:05		25%
Men 2-3	9:35		25%
Elite Wom P-1-2-3	10:15	FB	25%*
Elite Men P-1-2	10:40	FB	25%*

### Saturday May 4

**Course Description:** Flat out-and-back course with a turn-around for 8.5 miles.

**Start Times:** Start times will be consecutive, allowing 2 minutes between groups on 30-second starts. Those listed above are approximate, and subject to revision based on number of starters in each group. **Due to the tremendous turnout, Waves 9 and 10 (Pro) will NOT have one-minute starts for the final 10 riders.**

**Mishaps:** Riders suffering a recognized mishap that is *immediately* reported to and observed by a race official will receive their actual time of crossing the line without consideration of the time limit.

**Elite Categories Time Limit:** Based on the time of the 5<sup>th</sup> person across the line.

**Elite Categories Points:** Stage Points schedule B at the Finish. No time bonuses will be awarded.

#### Stage Notes

Parking: Frontage Road

Sign-in: **None**

Staging: Arrive at the start no later than 15 minutes before your start time.

Start: Start times posted online and emailed to participants. Start house is at the power station.

Wheel Support: At the start. See "Mishaps" above.

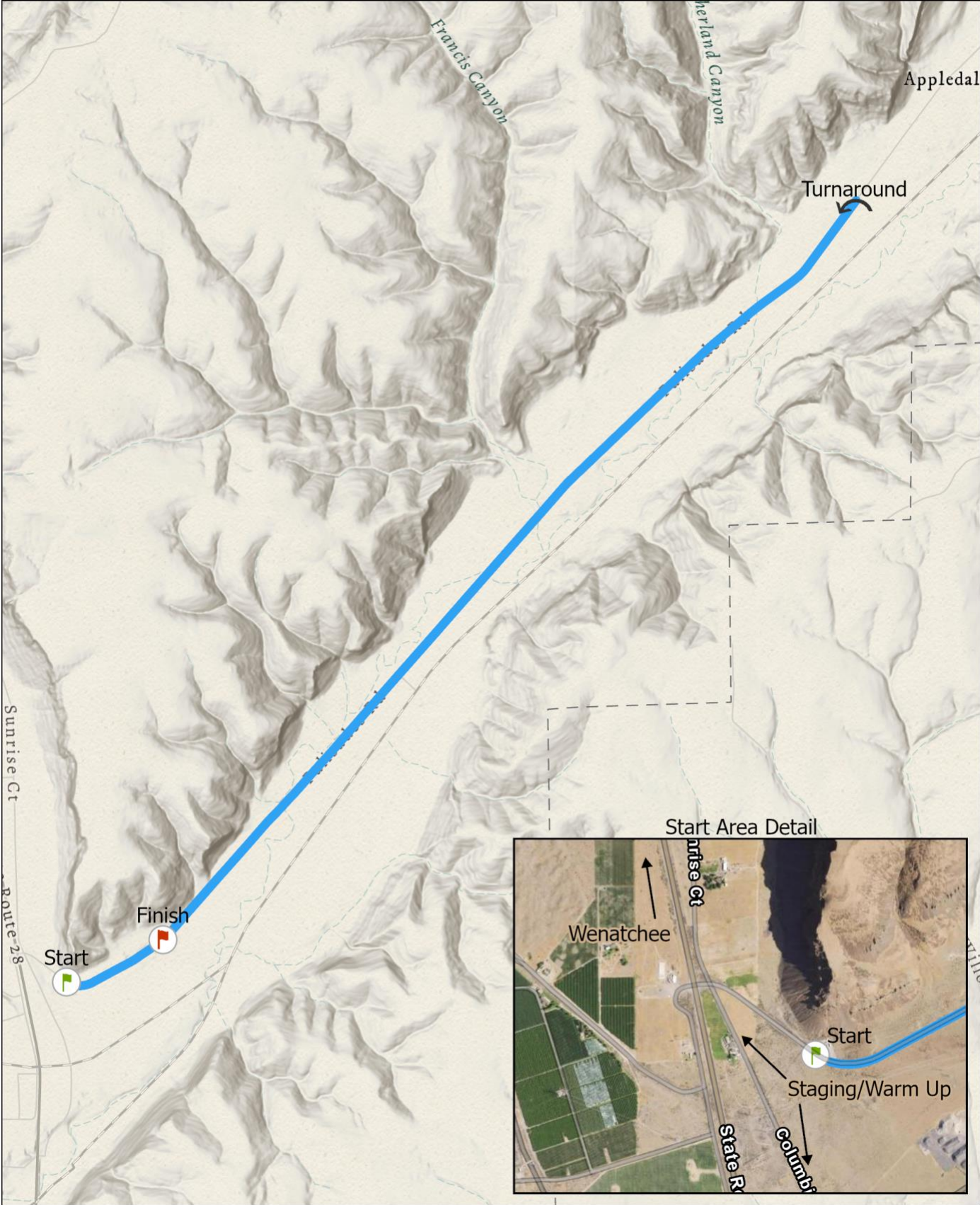
Medical: Near the Start area

Podium: Start of Criterium – Call-ups. Pick up the jersey at sign-in for the Criterium.

**Driving Directions:** Head South on Hwy 28 out of East Wenatchee. In approximately 15 miles, take a left on Palisades road. Parking along the frontage road.

# Tour de Bloom

## STAGE 3 BUILDERS FIRSTSOURCE - PALISADES TIME TRIAL COURSE MAP



# Tour de Bloom

## STAGE 4 ROOKARD POOLS TWILIGHT CRITERIUM



### Wenatchee - Twilight Criterium

Categories	Sign-in Open	Start	Time Bonus	Race Time	Time Limit
Women 4-Novice	1:50-2:50	3:00	1+F	0:20	20%
Men 4/Novice	2:20-3:20	3:30	1+F	0:30	20%
Women 3-4	3:00-4:00	4:10	1+F	0:30	20%
Master 40+ 4-5 *	3:40-4:40	4:50	1 (group) +F (All)	0:30	20%
Master 50+ 3-4-5 *					20%
Master 60+ Open *					20%
Master 35+ 1-2-3 *	4:20-5:20	5:30	1 (group) + F (both)	0:45	20%
Master 50+ 1-2-3 *					20%
Men 2-3	5:15-6:15	6:25	1+F	0:45	20%
<b>Fat Tire Crit</b>		7:15			
Elite Wom P-1-2-3	6:20-7:20	7:50	2+FA (Pts, Time)	0:50	10%
Elite Men P-1-2	7:35-8:35	9:00	3+ FA (Pts, Time)	1:00	10%

### Saturday May 4

**Course Description:** The Rookard Pools Downtown Criterium is a 1KM 4-corner rectangular course in the heart of historic Wenatchee over a six-block loop. A large beer garden near the Finish Line attracts hundreds of spectators. Elite categories can expect large cash crowd primes.

**Free Laps:** Up to two laps *may* be awarded riders suffering mishaps in the Criterium. A recognized mishap is a fall, a puncture, or breakage of an essential component of the bicycle. Riding backwards on the course is prohibited. Free lap eligibility ends when 8 laps to go are displayed on the lap board.

**Lapped riders** may be removed from the race by the Chief Referee near the Finish line. Such removed riders will receive a pro-rated time and may start the next stage if their calculated time is within the time limit. Riders injured in a crash and unable to continue may be given a pro-rated time and allowed to start the next stage.

**Riders dropping out without being removed by the Chief Referee will be listed as “DNF” and will not be allowed to start the next stage.**



# Tour de Bloom

## Stage Notes

Parking: Off street parking lots along Columbia Street, one block east of criterium course

Sign-in: Near announcers at Finish line on Wenatchee Ave.

Staging: Arrive at the start no later than 10 minutes before your start time.

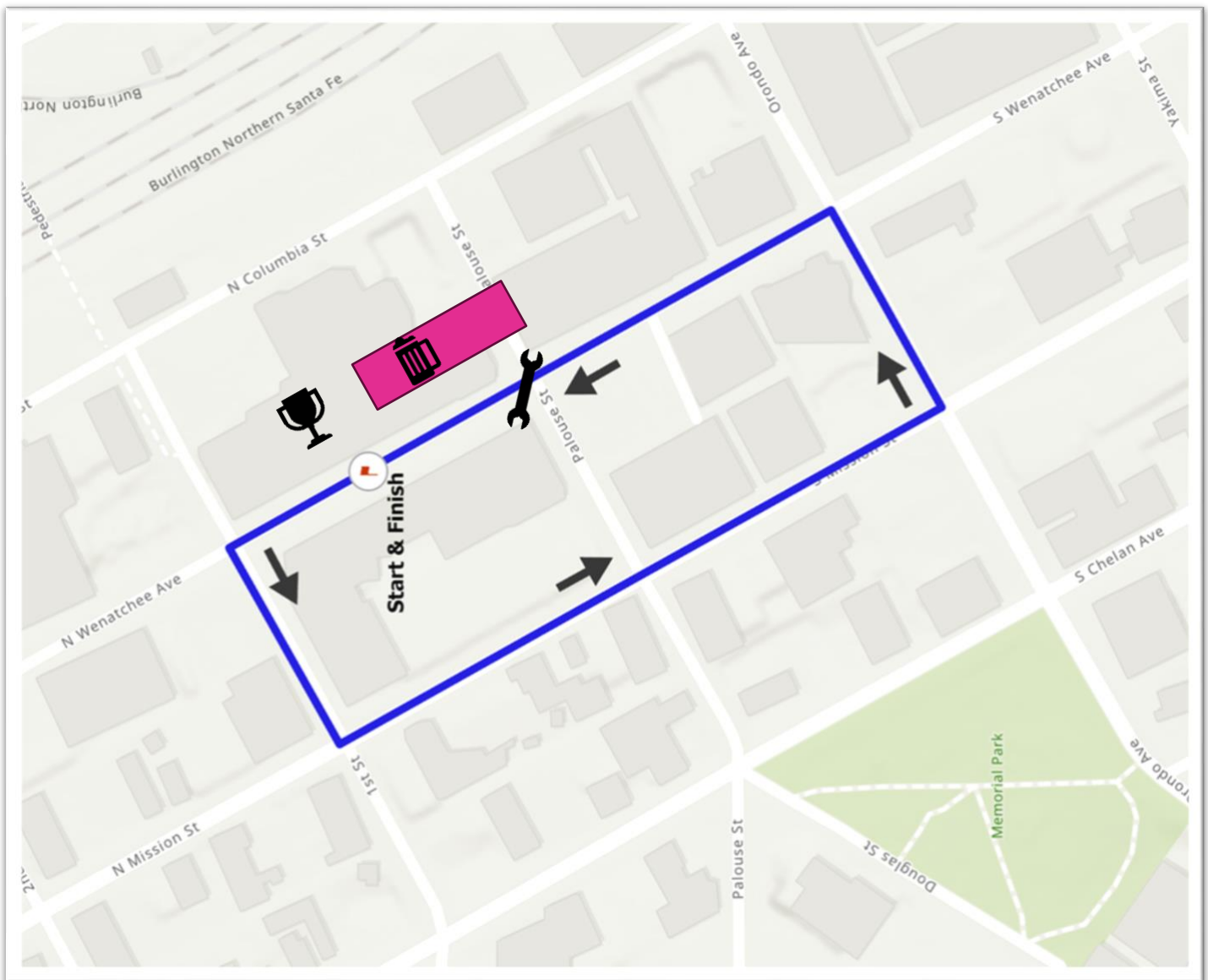
Start/Finish: Wenatchee Ave between Palouse and First Streets

Pit: Wenatchee Ave, south of the Start/Finish line. Elite Teams provide at least one set of wheels.

Medical: Wenatchee Ave and Palouse Street

Podium: Immediately after the finish of each race, near the Finish line.

Team Tents: Reserved areas: 1) Wenatchee Ave/First St 2) Wenatchee Ave/Palouse St 3) Wenatchee Ave/Orondo Ave



STAGE 4 CRITERIUM COURSE MAP

# Tour de Bloom

## STAGE 5: ARLBERG SPORTS PLAIN ROAD RACE



### Plain Road Race

Offset	Categories	Start2	End 1	End 2	End 3	Mt Cat 1	Pts & Bonus Lap*	Feed on Laps	Total Laps	Miles	Est. MPH	Limit
0:00	Elite Men P-1-2	9:00	9:55	10:51	11:47	F	1,2,F	2,3	3	75.2	26.3	16%
05:00	Master 35+ 1-2-3	9:05	10:06	11:07	12:08		F	2,3	3	75.2	24.0	20%
	Master 50+ 1-2-3						F					20%
10:00	Men 2-3	9:10	10:13	11:17	12:21		F	2,3	3	75.2	23.1	20%
15:00	Men 4/Novice	9:15	10:19	11:24			F	2	2	50.7	22.7	20%
	<b>BREAK</b>											
0:00	Elite Wom P-1-2-3	13:30	14:37	15:45		F	1,F	2	2	50.7	21.7	20%
05:00	Master 40+ 4-Novice	13:35	14:45	15:56			F	2	2	50.7	20.7	20%
	Master 50+ 3-4-Novice						F					20%
	Master 60+ Open						F					20%
10:00	Women 3-4	13:40	14:58	16:17			F	2	2	50.7	18.7	20%
45:00	Women 4-Novice	13:45	15:06				F	1	1	26.2	18.1	Broom

### Sunday May 4

**Course Description:** The Arlberg Sports Plain Road Race will start and finish near Plain Cellars in the bustling village of Plain. This year's edition utilizes roads north and west of Plain, including some along the north shore of scenic Lake Wenatchee.

**Directions from Wenatchee:** Plain is off Hwy 2 a short distance from Coles Corner. Right on Hwy 207 (Chumstick Canyon Road) to Plain.

#### Stage Notes

Parking: off-street at Plain Cellars, 18749 Alpine Acres Road, Plain, WA 98826. NO PARKING AT FINISH LINE OR PLAIN BUSINESSES!!

Sign-in: Plain Cellars, 18749 Alpine Acres Road. Opens 1hr 10 before the starts and closes 10 min before.

Start: near Plain Cellars in the village of Plain

Feed Zones: Near Cedar Crest. Please do not throw bottles/litter into the ditch. Clean up after yourselves.

**CAUTION!** Elite categories are restricted to one lane for several sections, as indicated on the following page.

**\*Elite Points Classification:** Laps 1 M/W, lap 2 M and the Finish-B. Time bonus *only* for other classes.

**Hillclimb finish:** about 1.77km before the finish line, intersection of Camp 12 Rd and Chumstick Highway.

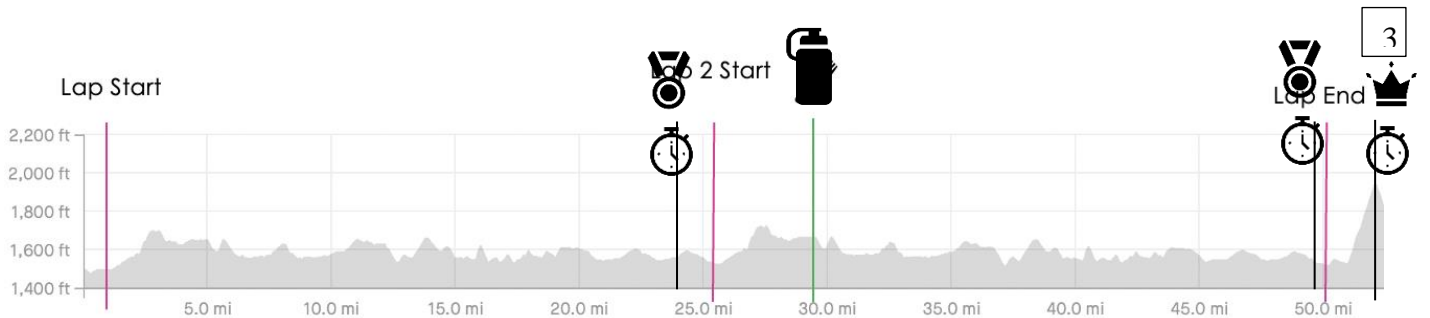
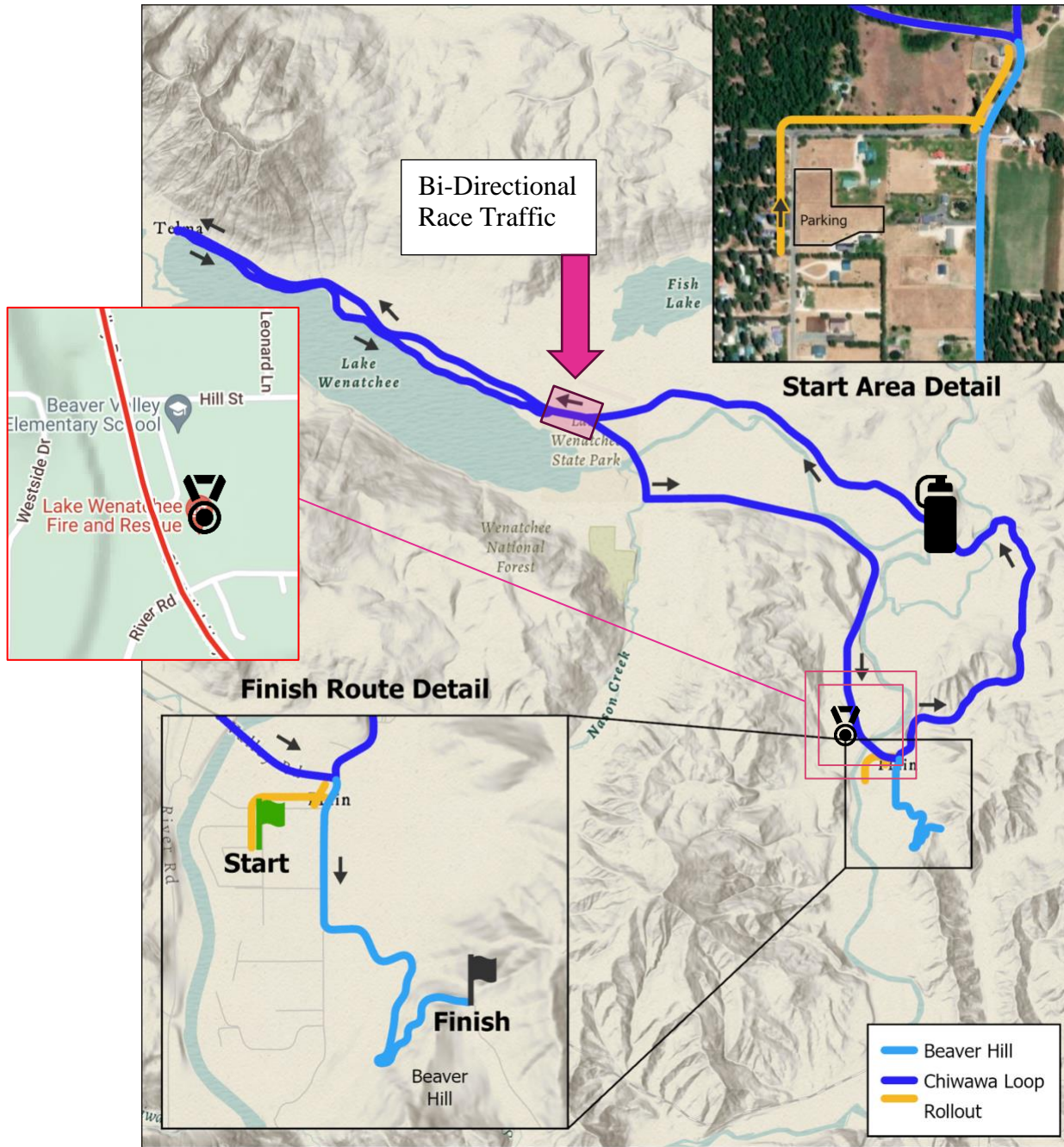
Finish: Near the top of Beaver Hill. 3K rule does not apply to this stage.

Medical: Tent at Plain Cellars

Podium: Plain Cellars, 15-20 min after the first riders finish.

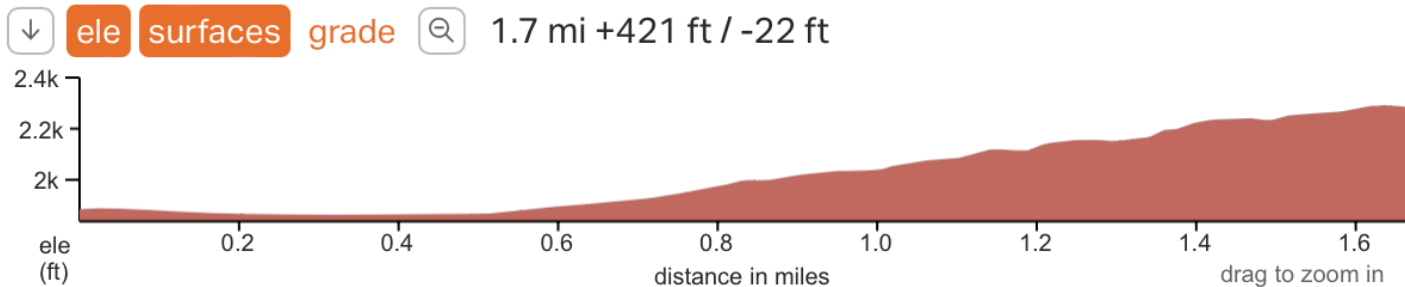
# Tour de Bloom

Strava map [here](#). GPX file download available with a Strava Summit account.



Course Profile for two laps. Red lines are approximate circuits.

# Tour de Bloom



## FINAL CLIMB FROM TURN – CATEGORY 3 CLIMB - Elites

### Cuesheet Stage 5 Plain Road Race

	1 lap	2 laps	3 laps
<b>Neutral Section from Start</b>			
Go straight on Alpine Acres Road	0.0		
Turn right onto Chapel Drive	0.2		
Turn left onto Beaver Valley Road	0.4		
Turn left to continue on Beaver Valley Road	0.5		
<b>Begin Circuit</b>	<b>0</b>	<b>24.5</b>	<b>49</b>
Take the right fork to Chiwawa Loop Road	0	24.5	50.3
<b>FEED ZONE/GREEN ZONE</b>		<b>28.7</b>	<b>54.5</b>
Keep right onto Wye Connector Road	8.2	32.7	57.2
<b>Begin bi-directional race traffic. Keep right.</b>	<b>8.7</b>	<b>33.2</b>	<b>57.7</b>
Turn slight right onto Lake Wenatchee Highway	8.7	33.2	57.7
End bi-directional race traffic.	9.0	33.5	58.0
Turn sharp left onto North Shore Drive	13.5	38	62.5
<b>Begin bi-directional race traffic. Keep right.</b>	<b>18.1</b>	<b>42.6</b>	<b>67.1</b>
Turn right onto Lake Wenatchee Highway	18.1	42.6	67.1
End bi-directional race traffic.	18.5	43.0	67.5
Turn left onto Beaver Valley Road	19.6	44.1	68.6
<b>Points Sprint Pros – Men Laps 1-2, Wom Lap 1 @ Lk W. Vly. Fire &amp; Rescue</b>	<b>24</b>	<b>48.5</b>	<b>74.2</b>
Turn left onto Chiwawa Loop Road – Begin next circuit	24.5	49	73.5
<b>End of Circuit 1</b>	<b>24.5</b>		
<b>End of Circuit 2</b>		<b>49</b>	
<b>End of Circuit 3</b>			<b>73.5</b>
Continue STRAIGHT on Beaver Valley Road	24.5	49	73.5
Veer left on Beaver Valley Road	24.9	49.5	74
Begin Category 3 climb	25.4	50	74.5
<b>Finish Cagetry 3 Climb Elites</b>	<b>26.2</b>	<b>50.7</b>	<b>75.2</b>

# Tour de Bloom

## 34. APPENDIX – PAST WINNERS & USEFUL FORMS

Tour de Bloom Past Winners		
Year	Men Elite	Women Elite
2024	???	???
2023	Campbell Parrish	Rachel Urban
2022	Sean Hollenbeck	Jennifer Wheeler
2021	<b>COVID</b>	<b>COVID</b>
2020	<b>COVID</b>	<b>COVID</b>
2019	Kaler Marshall	Michelle Howe
2018	Florenz Knauer	Megan Rathwell
2017	Connor Toppings	Megan Rathwell
2016	Nigel Kinney	Morgan Cabot



# Tour de Bloom

Date: \_\_\_\_\_

To Whom it May Concern:

The following rider is a currently licensed member in good standing of the \_\_\_\_\_ Federation and is granted permission to race in the United States of America from the 1 May, 2024 through 6 May, 2024 at the following event(s): The Tour de Bloom, held in Washington State.

Name:

UCI ID:

Nation:

Team/Club:

Category:

Class:

The Cycling Federation (or rider, if not Federation issued) further certifies (check one):

\_\_\_\_\_ The rider is covered by medical insurance for racing in the United States.

\_\_\_\_\_ The rider is NOT covered by medical insurance for racing in the United States and will provide proof of additional insurance.

\_\_\_\_\_ The rider is NOT covered by special medical insurance for racing in the United States and accepts all risk and liability for racing in the United States. The rider is solely responsible for all their medical expenses and other damages which may be incurred by them or to them while racing in the US. Furthermore, the USA Cycling Standard Release Form will be signed by them and is binding under law.

Sincerely,

(signature)

Printed Name

*This document is to appear on Federation letterhead. It may be emailed or presented as a printed version. All fields above are to be completed. It must be signed by Federation staff granting permission.*

Form **W-9**  
(Rev. October 2018)  
Department of the Treasury  
Internal Revenue Service

## Request for Taxpayer Identification Number and Certification

Give Form to the requester. Do not send to the IRS.

▶ Go to [www.irs.gov/FormW9](http://www.irs.gov/FormW9) for instructions and the latest information.

Print or type.  
See Specific Instructions on page 3.

1 Name (as shown on your income tax return). Name is required on this line; do not leave this line blank.	
2 Business name/disregarded entity name, if different from above	
3 Check appropriate box for federal tax classification of the person whose name is entered on line 1. Check only <b>one</b> of the following seven boxes.  <input type="checkbox"/> Individual/sole proprietor or single-member LLC <input type="checkbox"/> C Corporation <input type="checkbox"/> S Corporation <input type="checkbox"/> Partnership <input type="checkbox"/> Trust/estate  <input type="checkbox"/> Limited liability company. Enter the tax classification (C=C corporation, S=S corporation, P=Partnership) ▶ _____ <b>Note:</b> Check the appropriate box in the line above for the tax classification of the single-member owner. Do not check LLC if the LLC is classified as a single-member LLC that is disregarded from the owner unless the owner of the LLC is another LLC that is <b>not</b> disregarded from the owner for U.S. federal tax purposes. Otherwise, a single-member LLC that is disregarded from the owner should check the appropriate box for the tax classification of its owner.  <input type="checkbox"/> Other (see instructions) ▶ _____	4 Exemptions (codes apply only to certain entities, not individuals; see instructions on page 3):  Exempt payee code (if any) _____  Exemption from FATCA reporting code (if any) _____  <i>(Applies to accounts maintained outside the U.S.)</i>
5 Address (number, street, and apt. or suite no.) See instructions.	Requester's name and address (optional)
6 City, state, and ZIP code	
7 List account number(s) here (optional)	

### Part I Taxpayer Identification Number (TIN)

Enter your TIN in the appropriate box. The TIN provided must match the name given on line 1 to avoid backup withholding. For individuals, this is generally your social security number (SSN). However, for a resident alien, sole proprietor, or disregarded entity, see the instructions for Part I, later. For other entities, it is your employer identification number (EIN). If you do not have a number, see *How to get a TIN*, later.

**Note:** If the account is in more than one name, see the instructions for line 1. Also see *What Name and Number To Give the Requester* for guidelines on whose number to enter.

Social security number									
			-				-		
or									
Employer identification number									
		-							

### Part II Certification

Under penalties of perjury, I certify that:

- The number shown on this form is my correct taxpayer identification number (or I am waiting for a number to be issued to me); and
- I am not subject to backup withholding because: (a) I am exempt from backup withholding, or (b) I have not been notified by the Internal Revenue Service (IRS) that I am subject to backup withholding as a result of a failure to report all interest or dividends, or (c) the IRS has notified me that I am no longer subject to backup withholding; and
- I am a U.S. citizen or other U.S. person (defined below); and
- The FATCA code(s) entered on this form (if any) indicating that I am exempt from FATCA reporting is correct.

**Certification instructions.** You must cross out item 2 above if you have been notified by the IRS that you are currently subject to backup withholding because you have failed to report all interest and dividends on your tax return. For real estate transactions, item 2 does not apply. For mortgage interest paid, acquisition or abandonment of secured property, cancellation of debt, contributions to an individual retirement arrangement (IRA), and generally, payments other than interest and dividends, you are not required to sign the certification, but you must provide your correct TIN. See the instructions for Part II, later.

Sign Here

Signature of U.S. person ▶

Date ▶

## General Instructions

Section references are to the Internal Revenue Code unless otherwise noted.

**Future developments.** For the latest information about developments related to Form W-9 and its instructions, such as legislation enacted after they were published, go to [www.irs.gov/FormW9](http://www.irs.gov/FormW9).

### Purpose of Form

An individual or entity (Form W-9 requester) who is required to file an information return with the IRS must obtain your correct taxpayer identification number (TIN) which may be your social security number (SSN), individual taxpayer identification number (ITIN), adoption taxpayer identification number (ATIN), or employer identification number (EIN), to report on an information return the amount paid to you, or other amount reportable on an information return. Examples of information returns include, but are not limited to, the following.

- Form 1099-DIV (interest earned or paid)

- Form 1099-DIV (dividends, including those from stocks or mutual funds)
  - Form 1099-MISC (various types of income, prizes, awards, or gross proceeds)
  - Form 1099-B (stock or mutual fund sales and certain other transactions by brokers)
  - Form 1099-S (proceeds from real estate transactions)
  - Form 1099-K (merchant card and third party network transactions)
  - Form 1098 (home mortgage interest), 1098-E (student loan interest), 1098-T (tuition)
  - Form 1099-C (canceled debt)
  - Form 1099-A (acquisition or abandonment of secured property)
- Use Form W-9 only if you are a U.S. person (including a resident alien), to provide your correct TIN.

*If you do not return Form W-9 to the requester with a TIN, you might be subject to backup withholding. See What is backup withholding, later.*

# Tour de Bloom

Form **W-8BEN**

(Rev. October 2021)

Department of the Treasury  
Internal Revenue Service

## Certificate of Foreign Status of Beneficial Owner for United States Tax Withholding and Reporting (Individuals)

▶ For use by individuals. Entities must use Form W-8BEN-E.

▶ Go to [www.irs.gov/FormW8BEN](http://www.irs.gov/FormW8BEN) for instructions and the latest information.

▶ Give this form to the withholding agent or payer. Do not send to the IRS.

OMB No. 1545-1621

**Do NOT use this form if:**

- You are NOT an individual . . . . . W-8BEN-E
- You are a U.S. citizen or other U.S. person, including a resident alien individual . . . . . W-9
- You are a beneficial owner claiming that income is effectively connected with the conduct of trade or business within the United States (other than personal services) . . . . . W-8ECI
- You are a beneficial owner who is receiving compensation for personal services performed in the United States . . . . . 8233 or W-4
- You are a person acting as an intermediary . . . . . W-8IMY

**Instead, use Form:**

**Note:** If you are resident in a FATCA partner jurisdiction (that is, a Model 1 IGA jurisdiction with reciprocity), certain tax account information may be provided to your jurisdiction of residence.

**Part I Identification of Beneficial Owner** (see instructions)

<b>1</b> Name of individual who is the beneficial owner	<b>2</b> Country of citizenship
<b>3</b> Permanent residence address (street, apt. or suite no., or rural route). <b>Do not use a P.O. box or in-care-of address.</b>	
City or town, state or province. Include postal code where appropriate.	
Country	
<b>4</b> Mailing address (if different from above)	
City or town, state or province. Include postal code where appropriate.	
Country	
<b>5</b> U.S. taxpayer identification number (SSN or ITIN), if required (see instructions)	
<b>6a</b> Foreign tax identifying number (see instructions)	<b>6b</b> Check if FTIN not legally required . . . . . <input type="checkbox"/>
<b>7</b> Reference number(s) (see instructions)	<b>8</b> Date of birth (MM-DD-YYYY) (see instructions)

**Part II Claim of Tax Treaty Benefits** (for chapter 3 purposes only) (see instructions)

**9** I certify that the beneficial owner is a resident of \_\_\_\_\_ within the meaning of the income tax treaty between the United States and that country.

**10 Special rates and conditions** (if applicable—see instructions): The beneficial owner is claiming the provisions of Article and paragraph \_\_\_\_\_ of the treaty identified on line 9 above to claim a \_\_\_\_\_ % rate of withholding on (specify type of income): \_\_\_\_\_

Explain the additional conditions in the Article and paragraph the beneficial owner meets to be eligible for the rate of withholding: \_\_\_\_\_

**Part III Certification**

Under penalties of perjury, I declare that I have examined the information on this form and to the best of my knowledge and belief it is true, correct, and complete. I further certify under penalties of perjury that:

- I am the individual that is the beneficial owner (or am authorized to sign for the individual that is the beneficial owner) of all the income or proceeds to which this form relates or am using this form to document myself for chapter 4 purposes;
- The person named on line 1 of this form is not a U.S. person;
- This form relates to:
  - (a) income not effectively connected with the conduct of a trade or business in the United States;
  - (b) income effectively connected with the conduct of a trade or business in the United States but is not subject to tax under an applicable income tax treaty;
  - (c) the partner's share of a partnership's effectively connected taxable income; or
  - (d) the partner's amount realized from the transfer of a partnership interest subject to withholding under section 1446(f);
- The person named on line 1 of this form is a resident of the treaty country listed on line 9 of the form (if any) within the meaning of the income tax treaty between the United States and that country; and
- For broker transactions or barter exchanges, the beneficial owner is an exempt foreign person as defined in the instructions.

Furthermore, I authorize this form to be provided to any withholding agent that has control, receipt, or custody of the income of which I am the beneficial owner or any withholding agent that can disburse or make payments of the income of which I am the beneficial owner. **I agree that I will submit a new form within 30 days if any certification made on this form becomes incorrect.**

I certify that I have the capacity to sign for the person identified on line 1 of this form.

**Sign Here** ▶

\_\_\_\_\_  
Signature of beneficial owner (or individual authorized to sign for beneficial owner)

\_\_\_\_\_  
Date (MM-DD-YYYY)

\_\_\_\_\_  
Print name of signer